

5/8" - 2 1/2"
 O.D.



Features :

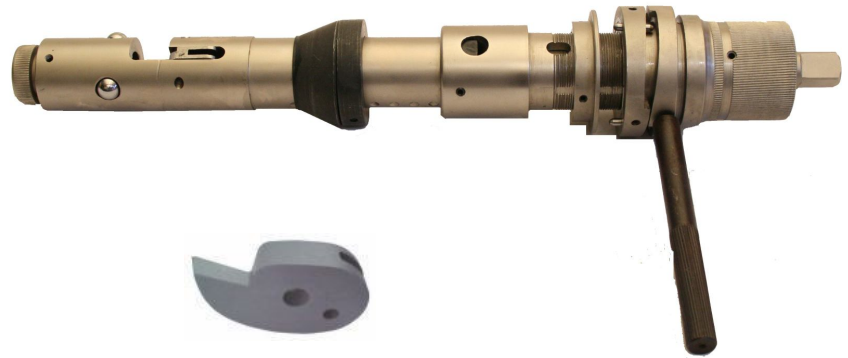
- DBX make power driven internal tube cutter suitable for cutting tubes behind tube sheet and tube end projection of ferrous and non ferrous tubes. This cutter is easy to operate with an adjustable collar for reaching into tubes at various depth . Bit can be easily replaceable

Tube O.D.	Tube Gauge (BWG)	Tube Cutter Model No. (Std. Reach)	Tube Cutter Model No. (Std. Reach)
5/8"	14 - 22	ATP - 625	ATP - 625 SB
3/4"	14 - 22	ATP - 750	ATP - 750 SB
7/8"	14 - 22	ATP - 875	ATP - 875 SB
1"	12 - 22	ATP - 1000	ATP - 1000 SB
1.1/4"	12 - 22	ATP - 1250	ATP - 1250 SB
1.1/2"	12 - 22	ATP - 1500	ATP - 1500 SB

Note : We supply different bits for ferrous & Non- Ferrous material. Kindly specify the type of material while placing the order.

INTERNAL TUBE CUTTER- PR68 SERIES

1/2" - 4 1/2"
 O.D.



Features :

- The above cutter is mainly used to cut large diameter and higher gauge tubes found in boiler tubes.

Size	Tube Model Number	Spare Bit Model Number	Tube I.D. Range		Max. Tube O.D.		Body Diameter		Driver Square Male
			mm	inch	mm	inch	mm	inch	
095	0680951	1680951	10 - 12	.394 - .472	15	.591	9.5	.374	1/2"
105	0681051		11 - 13	.433 - .512	18	.709	10.5	.413	
115	0681151	1681151	12 - 14	.472 - .551	19	.748	11.5	.453	
125	0681251	1681251	13 - 15	.519 - .591	20	.787	12.5	.492	
135	0681351		14 - 17	.551 - .669	23	.906	13.5	.531	
155	0681551	1681751	16 - 19	.630 - .748	25	.984	15.5	.610	
175	0681751		18 - 21	.709 - .827	27	1.063	17.5	.689	
195	0681951	1681951	20 - 25	.787 - .984	34	1.339	19.5	.768	
245	0682451	1682451	25 - 30	.984 - 1.181	38	1.496	24.5	.965	
290	0682901	1682901	30 - 35	1.181 - 1.378	43	1.693	29	1.142	
330	0683301		35 - 40	1.378 - 1.575	48	1.890	33	1.299	
380	0683801	1684801	40 - 50	1.575 - 1.969	58	2.126	38	1.496	
480	0684801		50 - 60	1.969 - 2.362	68	2.677	48	1.890	
530	0685301	1684801	55 - 65	2.165 - 2.559	73	2.874	53	2.087	
630	0686301		65 - 75	2.559 - 2.953	83	3.268	63	2.480	
730	0687301	1687301	75 - 85	2.953 - 3.346	93	3.661	73	2.874	
830	0688301		85 - 95	3.346 - 3.740	103	4.055	83	3.268	
930	0689301		95 - 105	3.740 - 4.134	113	4.449	93	3.661	